



UNIVERSITY OF CAMBRIDGE INTERNATIONAL EXAMINATIONS
General Certificate of Education Advanced Subsidiary Level

ENVIRONMENTAL MANAGEMENT

8291/23

Paper 2 Hydrosphere and Biosphere

May/June 2013

INSERT

1 hour 30 minutes

READ THESE INSTRUCTIONS FIRST

This Insert contains Fig. 1.2, Fig. 2.1, Fig. 2.3 and Fig. 4.1.
DO NOT WRITE ON THIS INSERT.

This document consists of **5** printed pages and **3** blank pages.



The Kariba Dam supplies 1266 MW of electricity to parts of both Zambia (including the Copperbelt) and Zimbabwe.

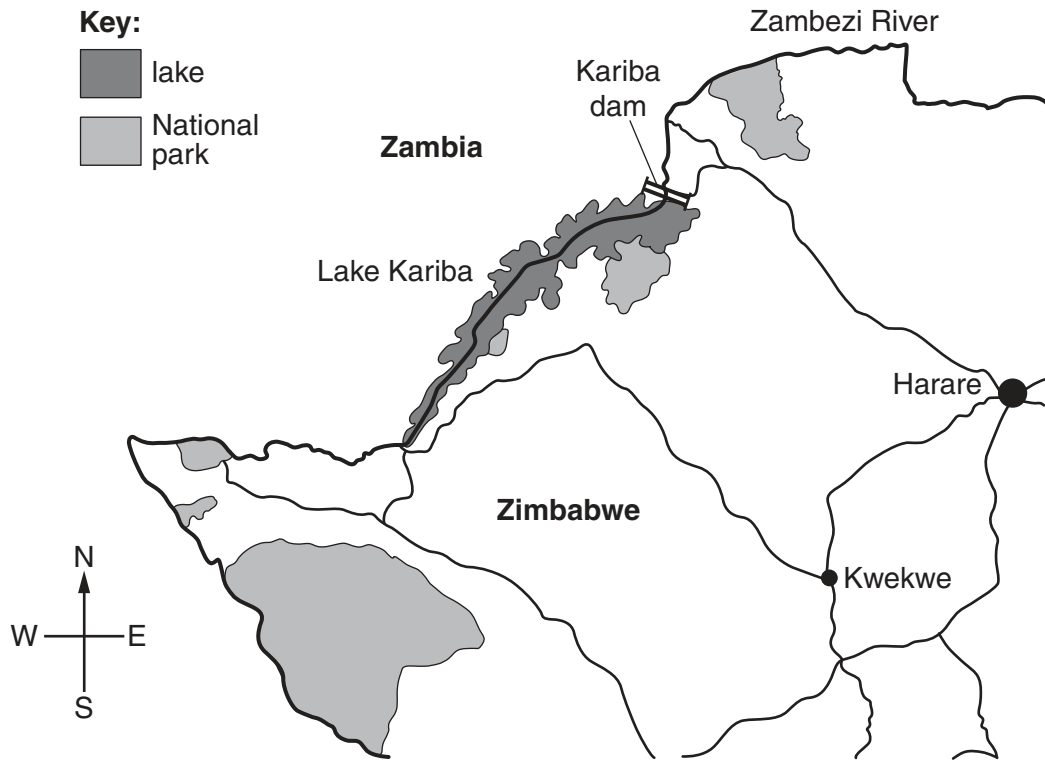
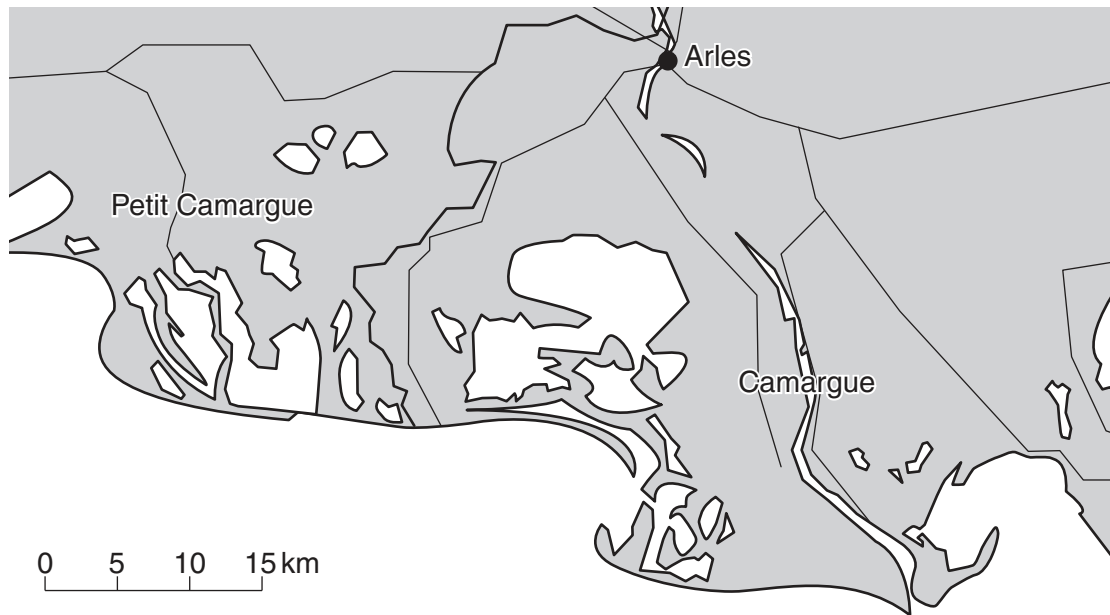


Fig. 1.2



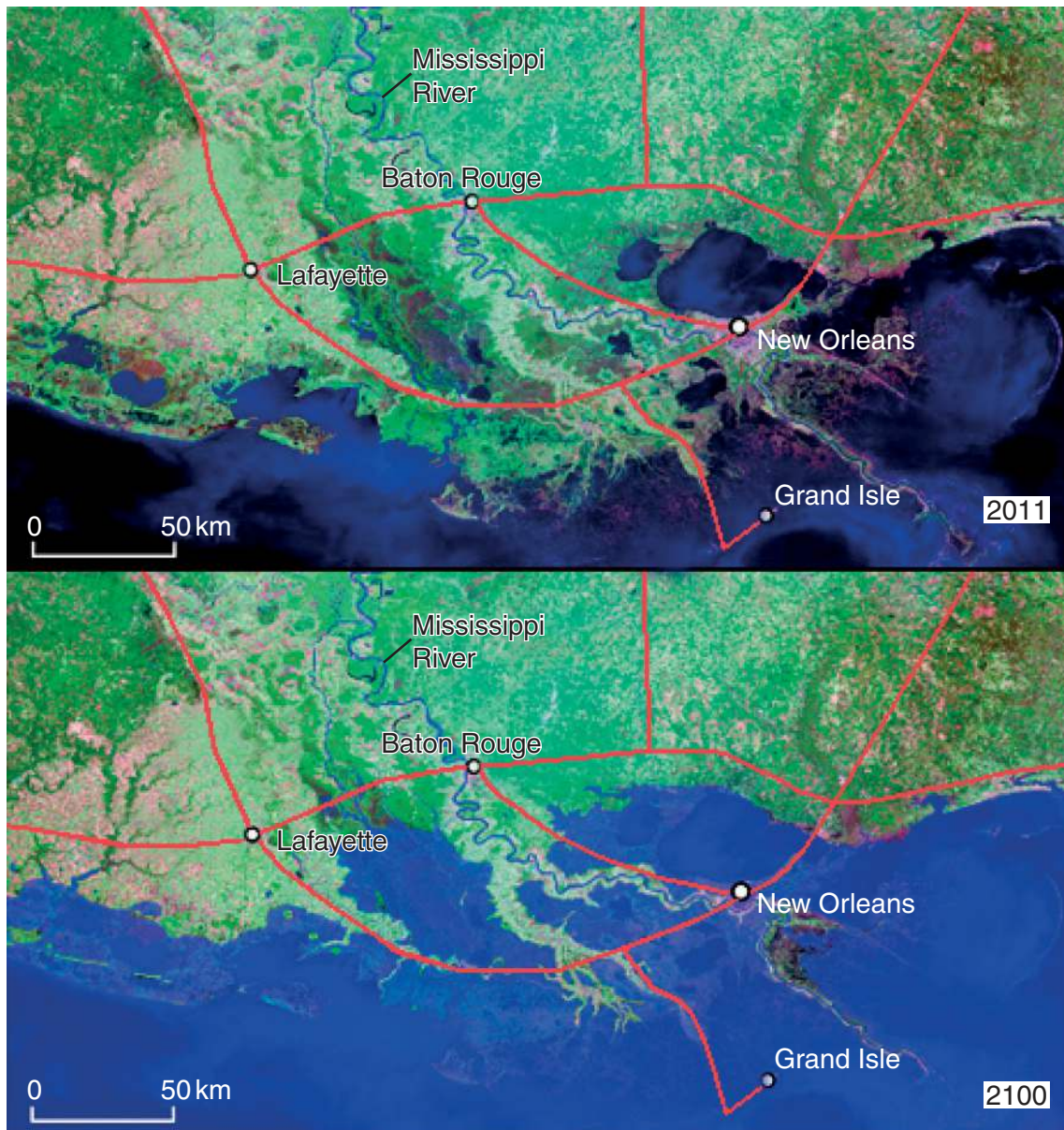
Fig. 2.1



Camargue is one of the largest areas of wetlands in Europe, in which numerous fragile ecosystems interpenetrate. This exceptional biological richness is produced by water and salt inputs into soil through periodic flooding.

The area is of international interest in terms of its vegetation and habitats, which are also essential for the protection of migratory birds.

Fig. 2.3



Key
○ towns
— roads

Fig. 4.1

BLANK PAGE

Copyright Acknowledgements:

Question 1b Figure 1.2 Photograph
Question 2a Figure 2.1 Photograph
Question 2b Figure 2.3 Photograph
Question 4 Figure 4.1 Photograph

© Rhys Jones; *Kariba Dam*; <http://upload.wikimedia.org/wikipedia/commons/f/f3/KaribaDam.jpg>.
© Arterra Picture Library / Alamy, BEMJHA.
© <http://tsouret.fond-ecran-image.com/blog-photo/files/2009/11/pont-de-gau-001.jpg>; Galerie photo de Tsouret.
© <http://news.nationalgeographic.com/news/2009/06/090629-mississippi-river-sea-levels/>; Illustrations courtesy Mike Blum, created using NASA images.

Permission to reproduce items where third-party owned material protected by copyright is included has been sought and cleared where possible. Every reasonable effort has been made by the publisher (UCLES) to trace copyright holders, but if any items requiring clearance have unwittingly been included, the publisher will be pleased to make amends at the earliest possible opportunity.

University of Cambridge International Examinations is part of the Cambridge Assessment Group. Cambridge Assessment is the brand name of University of Cambridge Local Examinations Syndicate (UCLES), which is itself a department of the University of Cambridge.